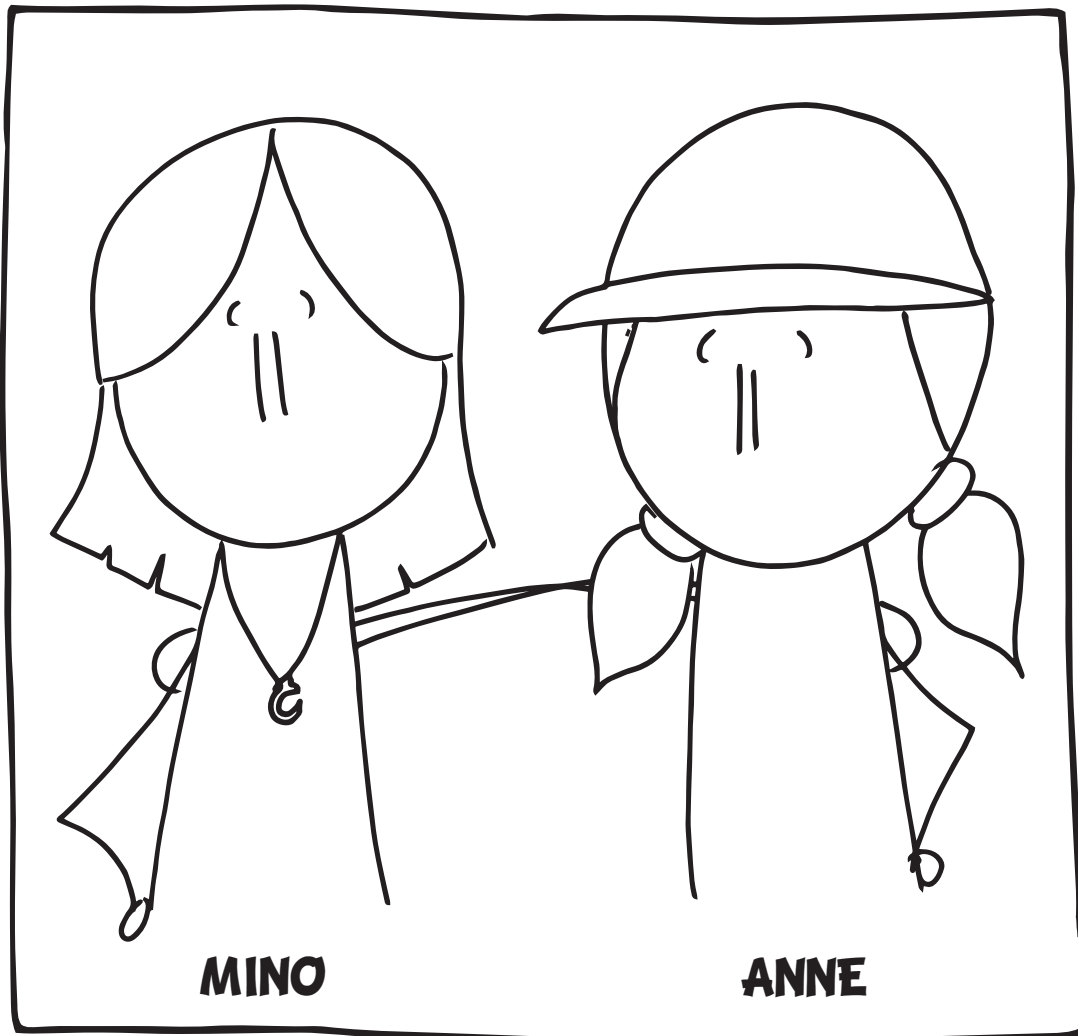
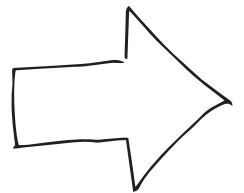


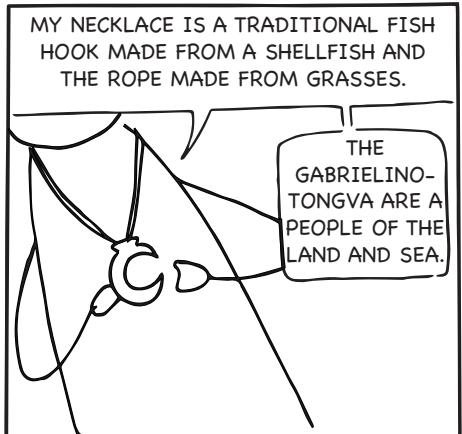
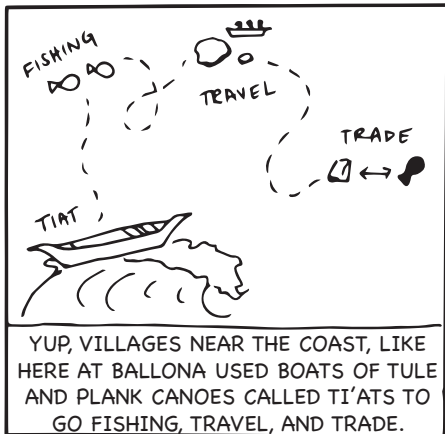
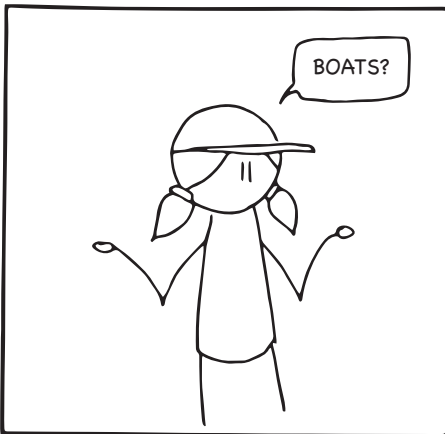
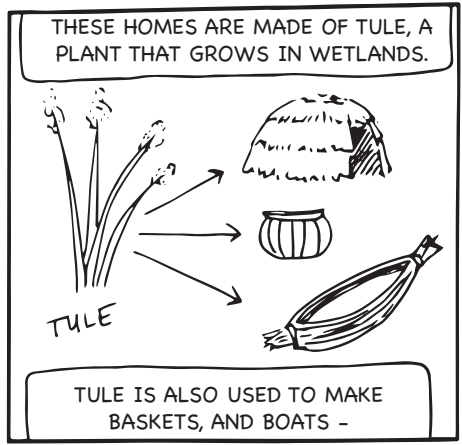
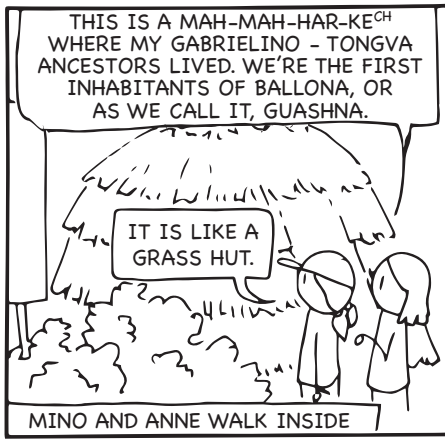
# EXPLORE BALLONA!

THE GABRIELINO-TONGVA AND BALLONA WETLANDS



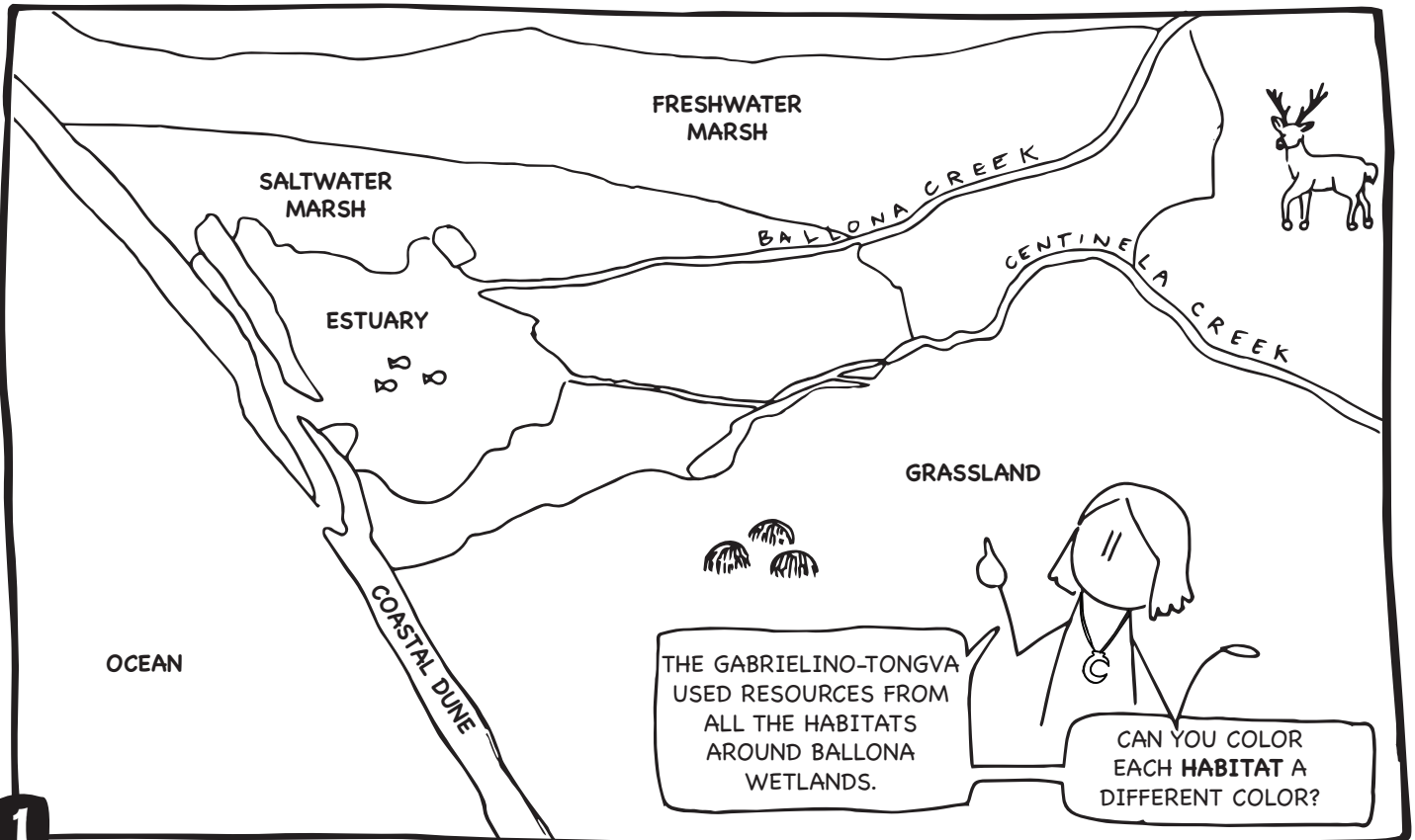
**MINO IS GABRIELINO-TONGVA AND HE IS  
EXCITED TO SHARE BALLONA WETLANDS  
AND HIS PEOPLE'S CONNECTION TO IT  
WITH HIS FRIEND ANNE. JOIN THEM AS  
THEY EXPLORE BALLONA!**





# MAP COLORING

**Directions:** Color the different habitats the Gabrielino-Tongva people historically used to survive near Ballona Wetlands.



MY ANCESTORS HUNTED ANIMALS LIKE RABBIT AND DEER IN THE GRASSLANDS AND GATHERED FRUITS AND SEEDS FOR FOOD.

HUNTING

GATHERING

THE WETLANDS PROVIDED MY ANCESTORS WHAT THEY NEEDED TO SURVIVE. LET'S KEEP EXPLORING TO LEARN MORE ABOUT BALLONA.

LET'S GO!

WHAT IS THAT?

RUSTLE RUSTLE

HOP

ARE YOU GOING TO EAT THE BUNNY!?

NOPE, I PREFER FRIES LIKE YOU. AND LIKE YOU, THE TONGVA NOW DON'T LIVE THE SAME AS WE DID IN THE PAST.

\*GASP\*

BUT SOME OF US STILL PRACTICE TONGVA CUSTOMS AND TRADITIONS TO KEEP MEMORIES OF OUR ANCESTORS ALIVE.

AND YOU KNOW, YOUR ANCESTORS PROBABLY ATE RABBIT AS WELL...

THE BUNNY IS SAFE, NEITHER OF US WILL EAT IT TODAY.

I NEVER THOUGHT OF IT THAT WAY...

HOORAY!!!

# WORD SEARCH

**Directions:** Discover the meaning of the Gabrielino-Tongva words below and find their English translation in the word search.

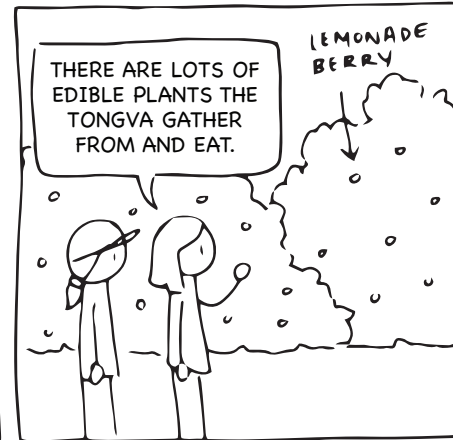
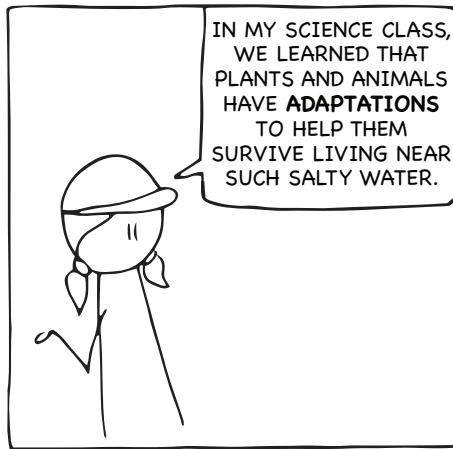
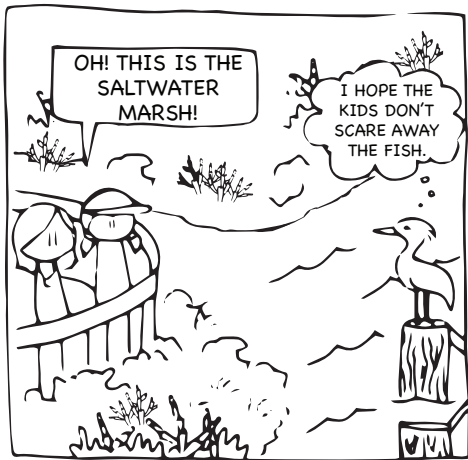
THE GABRIELINO-TONGVA ARE THE ORIGINAL PEOPLE OF TOVAANGAR. LEARN THE ORIGINAL WORDS FOR SOME OF OUR LOCAL PLANTS, ANIMALS, AND PLACES.



Z	J	Q	R	M	W	Z	R	P	P	C	T	R	D	G
H	M	G	O	D	L	D	J	P	K	R	E	P	E	L
M	U	A	E	R	D	E	T	F	N	T	Y	O	E	P
L	B	M	Y	A	K	F	E	I	A	A	D	C	L	H
X	H	C	M	Z	C	I	U	W	B	A	C	A	X	T
Q	A	S	F	I	I	S	E	P	D	B	N	B	O	N
C	O	S	Q	L	N	H	Z	M	I	K	A	E	E	V
K	J	T	U	P	A	G	V	N	C	N	E	R	C	T
K	M	A	H	W	J	Q	B	A	U	R	V	Y	F	X
R	I	V	E	R	S	L	N	I	T	H	O	R	E	W
S	E	R	W	M	J	O	P	K	R	I	G	R	F	O
B	H	P	O	M	E	J	A	H	F	D	J	W	K	W
C	D	X	M	C	L	O	C	U	J	C	Q	F	P	L
D	A	M	G	A	E	K	F	W	Z	K	C	Q	D	N
T	I	Y	E	E	L	A	H	W	A	G	E	F	R	D

## WORD BANK

- ku'r ke-ur (FISH)
- ti-at (PLANK CANOE)
- wiit (OAK TREE)
- kyoot (WHALE)
- papaaxayt (RIVERS)
- piinor (HUMMINGBIRD)
- toovit (RABBIT)
- chiruuko' (LIZARD)
- muuhut (OWL)
- paara' (WATER)

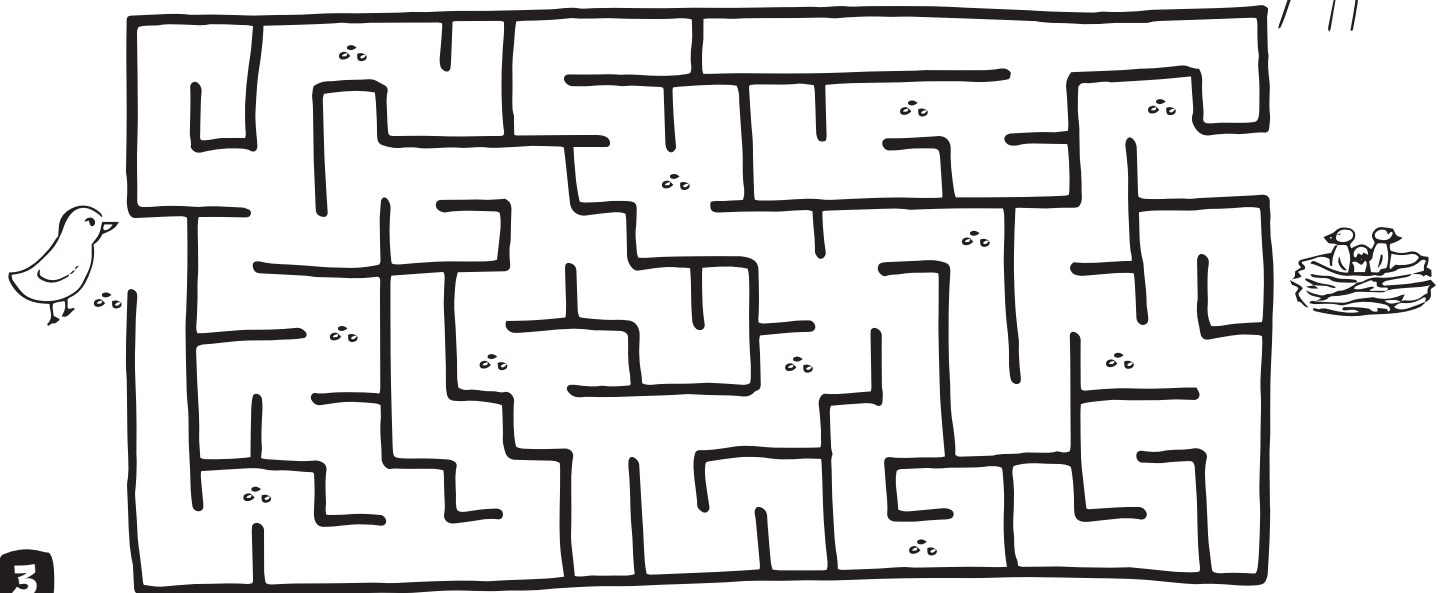


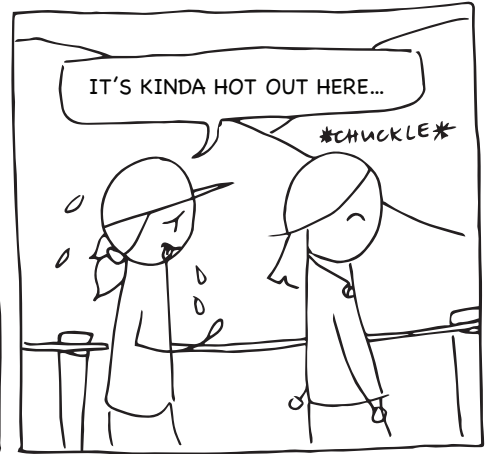
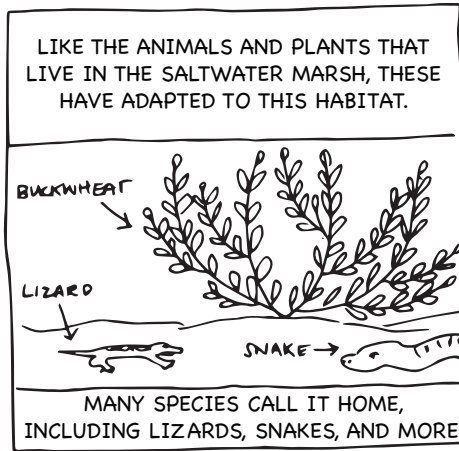
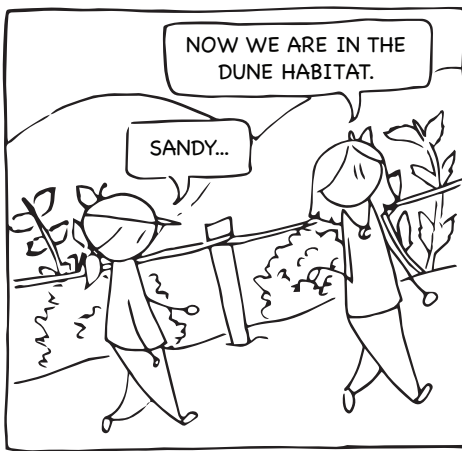
A BIRD LOOKS FOR FOOD...

# MUNCHING MAZE

**Directions:** Help the bird collect berries as you go through the maze to take back to the nest for its chicks.

MANY ANIMALS, LIKE BIRDS AND RABBITS, EAT THE FRUIT OF PLANTS. THEY GET FOOD FOR THEMSELVES AND THEIR YOUNG. WHEN THEY POOP OUT THE SEEDS IT ALSO HELPS THE PLANT TO MOVE THE SEEDS TO NEW PLACES TO GROW. HELP THIS BIRD BRING BERRIES TO ITS YOUNG BY COMPLETING THE MAZE!





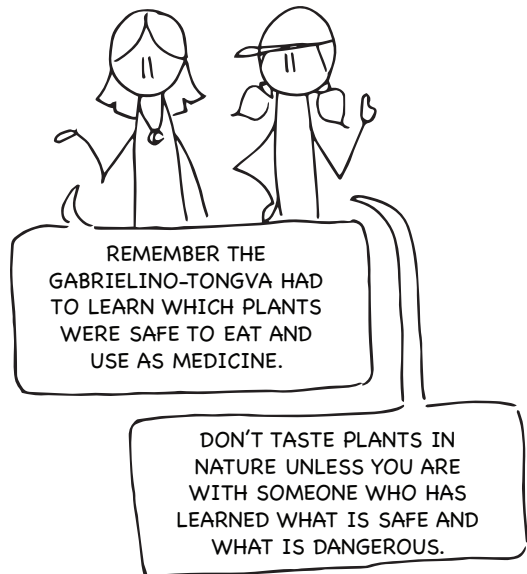
# WORD SCRAMBLE

**Directions:** Unscramble the letters below to discover the different medicinal plants used by the Gabrielino-Tongva. Use the word bank for clues.

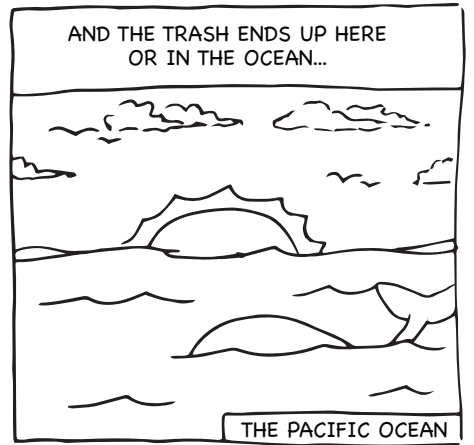
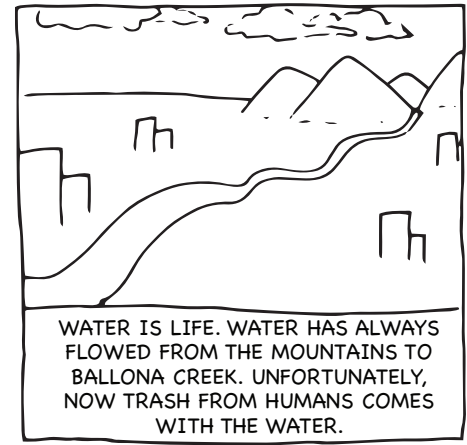
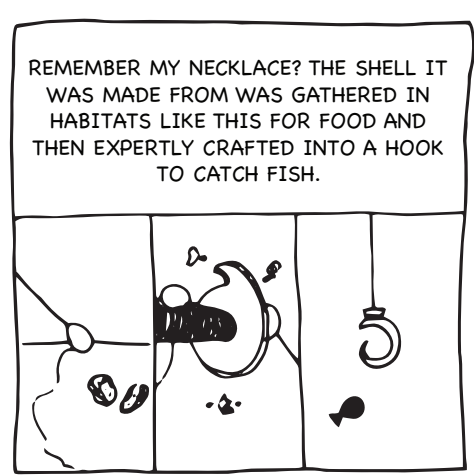
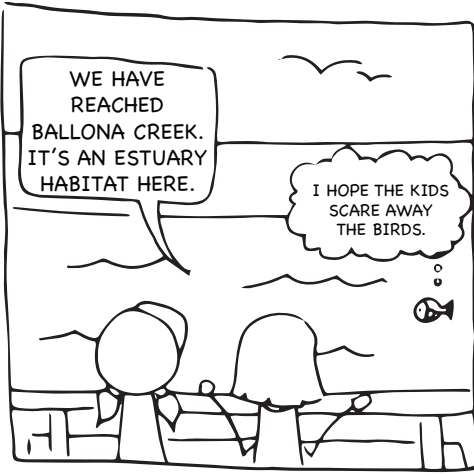
1. L O W R I D E S  
\_ \_ \_ \_ \_
2. N O T O Y  
\_ \_ \_ \_ \_
3. T A G W I S E H E  
\_ \_ \_ \_ \_
4. R O W T U G M  
\_ \_ \_ \_ \_
5. B E R O A M N E E D Y R L  
\_ \_ \_ \_ \_
6. L O W L I W  
\_ \_ \_ \_ \_
7. H E R B U S G A S  
\_ \_ \_ \_ \_
8. B L U E F U N S H O W S R  
\_ \_ \_ \_ \_

## WORD BANK

- |                |            |
|----------------|------------|
| BUSH SUNFLOWER | TOYON      |
| LEMONADE BERRY | WHITE SAGE |
| MUGWORT        | WILD ROSE  |
| SAGEBRUSH      | WILLOW     |



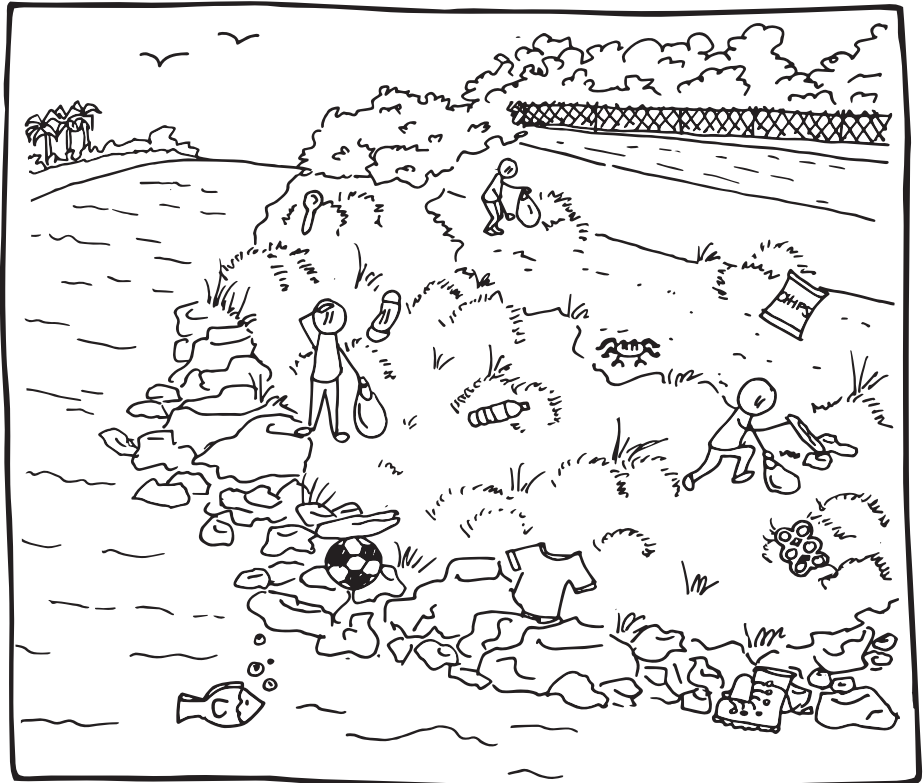


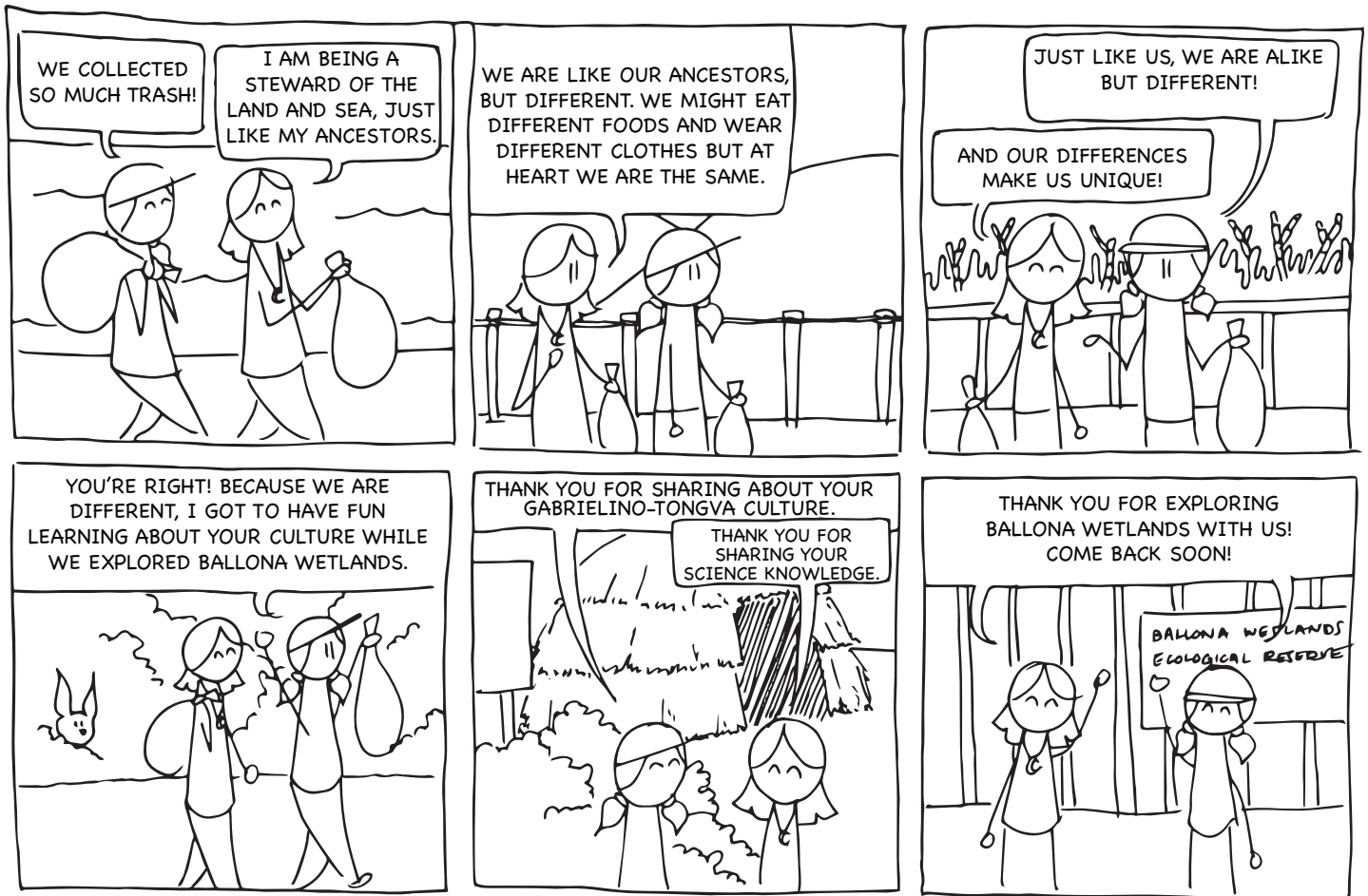


# CREEK CLEAN-UP

**Directions:** Help clean up Ballona Creek. Find and circle all of the things in the creek that do not belong.

THE GABRIELINO-TONGVA ARE THE ORIGINAL STEWARDS OF THE LAND AND SEA. TODAY, WE CAN ALL BE STEWARDS OF THE LAND AND SEA AND TAKE CARE OF THEM BECAUSE THEY TAKE CARE OF US!

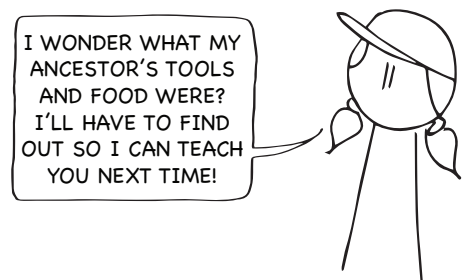




# ALIKE BUT DIFFERENT

Directions: Match each traditional Gabrielino-Tongva item with its use and what it might look like today.

<b>TRADITIONAL</b>					
<b>USE</b>	<b>MEDICINE</b>	<b>DISH</b>	<b>TRANSPORTATION</b>	<b>HOME</b>	<b>FOOD</b>
<b>TODAY</b>					



# PEN PALS

**Directions:** Write a letter to Mino to share what you have learned about his Gabrielino-Tongva culture. Are there ways you are similar to Mino? Are there ways you are different?

Dear Mino,

Lined area for writing the letter.

Sincerely,

\_\_\_\_\_





# GLOSSARY

**Adaptation** - A trait that helps an organism survive in certain habitats. The trait can be internal or external body parts or even a behavior.

**Ancestor** - A person from long ago that is related to you. An example is your great, great, great, great-grandmother and grandfather.

**Dune** - A type of habitat with sandy soil. At Ballona Wetlands, this habitat is a Coastal Dune, which means it also has plants growing in the sandy soil.

**Estuary** - A type of habitat where fresh and salt water meet. It is usually near an ocean.

**Gabrielino-Tongva** - The original people that lived at Ballona Wetlands and throughout Tovaangar. The current Gabrielino-Tongva people may live near where their ancestors did or they may have moved far away.

**Guashna** - The Gabrielino-Tongva village that was near Ballona Wetlands prior to other cultures arriving here. The name can have several meanings, including “place of mud”.

**Habitat** - Where plants and animals find food, water, shelter, and space to survive.

**Mah-mah-har-ke<sup>ch</sup>** - The traditional home of the Gabrielino-Tongva people is made of a tall, grass-like plant called tule. Another word for their home is “kiiy”.

**Medicinal** - Something used as medicine. The Gabrielino-Tongva people use many plants as medicine.

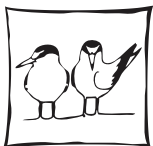


**Saltwater Marsh** - A type of habitat near the ocean. It is a wetland, where both water and land meet. The water and land are salty so special plants and animals live in this habitat.

**Ti’at** - The traditional boat of the Gabrielino-Tongva. It was built by tying planks of wood together and sealing with asphaltum (a natural glue). With this boat, they were able to travel to local islands and up and down the coast to trade. They were also able to hunt and fish with this type of boat.

**Tovaangar** - The name of the territory of the Gabrielino-Tongva people which includes present day greater Los Angeles County, and parts of Orange, Riverside, and San Bernardino Counties.

# SPECIAL THANKS



FRIENDS OF  
BALLONA  
WETLANDS

Friends of Ballona Wetlands wish to thank the following organization and people for making this activity guide possible.

California Department of Fish and Wildlife

Special thanks to Robert Dorame, Tribal Chair/Most Likely Descendant, Gabrielino Tongva Indians of California, for the information provided in this Activity Guide.

